

Symptom

I have no maps (empty screen) when starting RoadTraver

The maps of some countries are not installed.

The search for a place by means of F9 does not work properly.

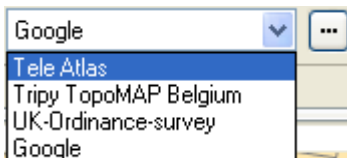
Problem description .

Some countries are not or badly installed.

Resolution

Option 1.

In the instance you have chosen the GOOGLE option in the top right drop down box



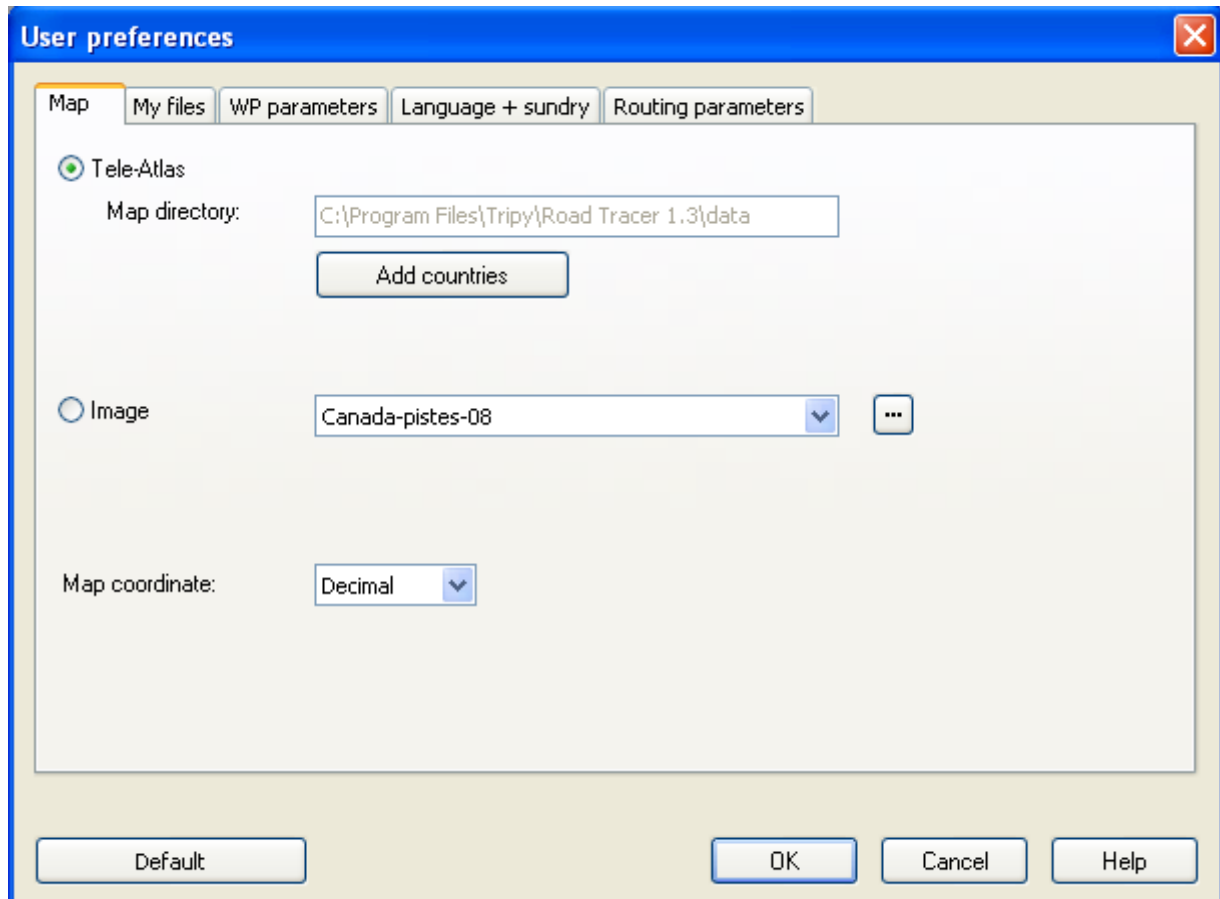
Select Tele Atlas from the list and search for the place (F9) to re-position the map


Option 2.

Search for the place (F9) to re-position the map

Option 3.

- 1) Select the menu **Edit** then **User's preferences**

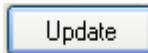


- 2) Select 

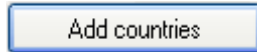
- 3) Deselect all the countries at the screen



4) Click on



5) Select



6) Select the countries you would like to re-install.



7) Click on

