

Symptom

The GPS synchronisation is not optimal, the Roadmaster takes too much time searching for satellites, the recorded trace is not correctly placed.

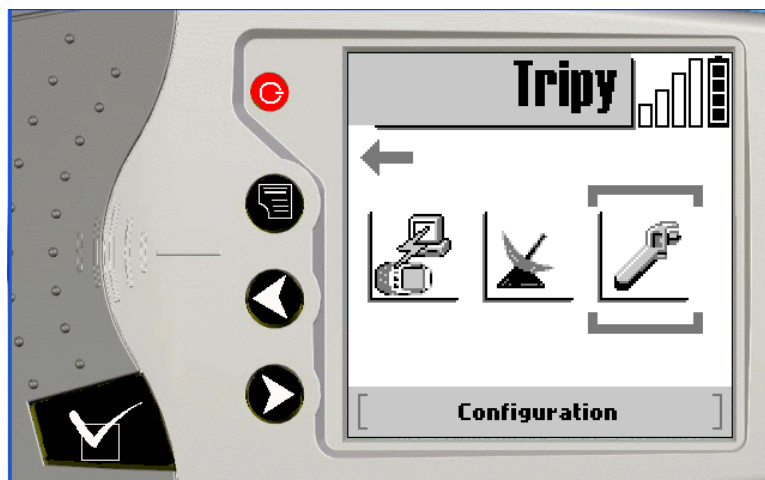
Problem description.

Part of the satellite constellation stored in the RoadMaster is corrupted. The reset will delete it and allow the re-generation of the local constellation.

Resolution.

The steps 1) to 3) disable the device's automatic switching off to avoid interrupting the GPS reset (it may in extreme circumstances take up to 30 minutes).

- 1) Select the Configuration menu. +



- 2) Select



+



- 3) Select



+



Result :



The disabling of the automatic power off will allow the complete initialisation of the RoadMaster GPS.

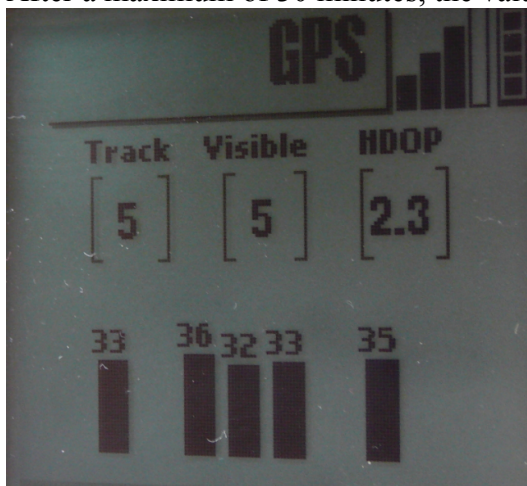
- 4) Position yourself in an exposed area.

- 5) Select « GPS Status » and press on



- 6) Press the Menu knob  then  to perform a GPS reset.

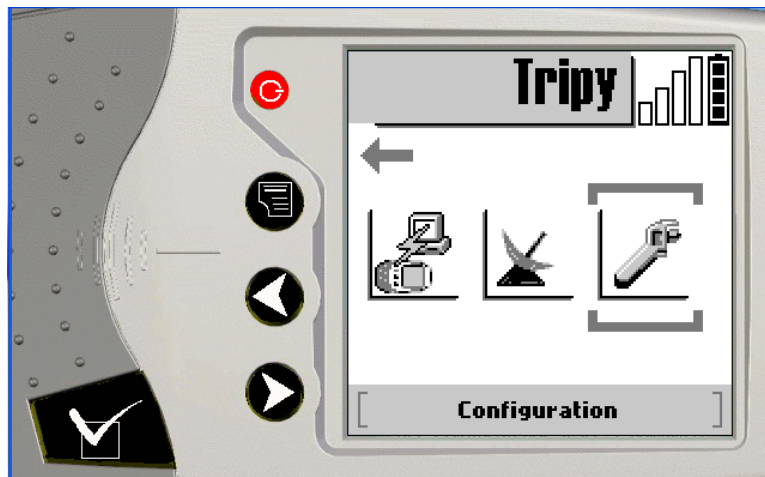
- 7) After a maximum of 30 minutes, the values displayed will look like below



- 8) A bar graph with one or several black lines next to the GPS letters indicate the quality of GPS synchronisation. Each of the lines in the bar graph below represents one satellite (in black the usable ones) .
- 9) If after 30 minutes none of the bar graph bars is black, communicate the screen information to us by e-mail.

In our example, it would be :
33,36,32,33,35 (5 satellites).

10) Go back to the configuration menu and press



11) Select



+



12) Select



+



Result :



The automatic power off is now activated.

From there onward, the GPS synchronisation will rapidly happen : less than one minute if you start from the place you finished the previous time.

The GPS synchronisation will happen faster if you do not move.