


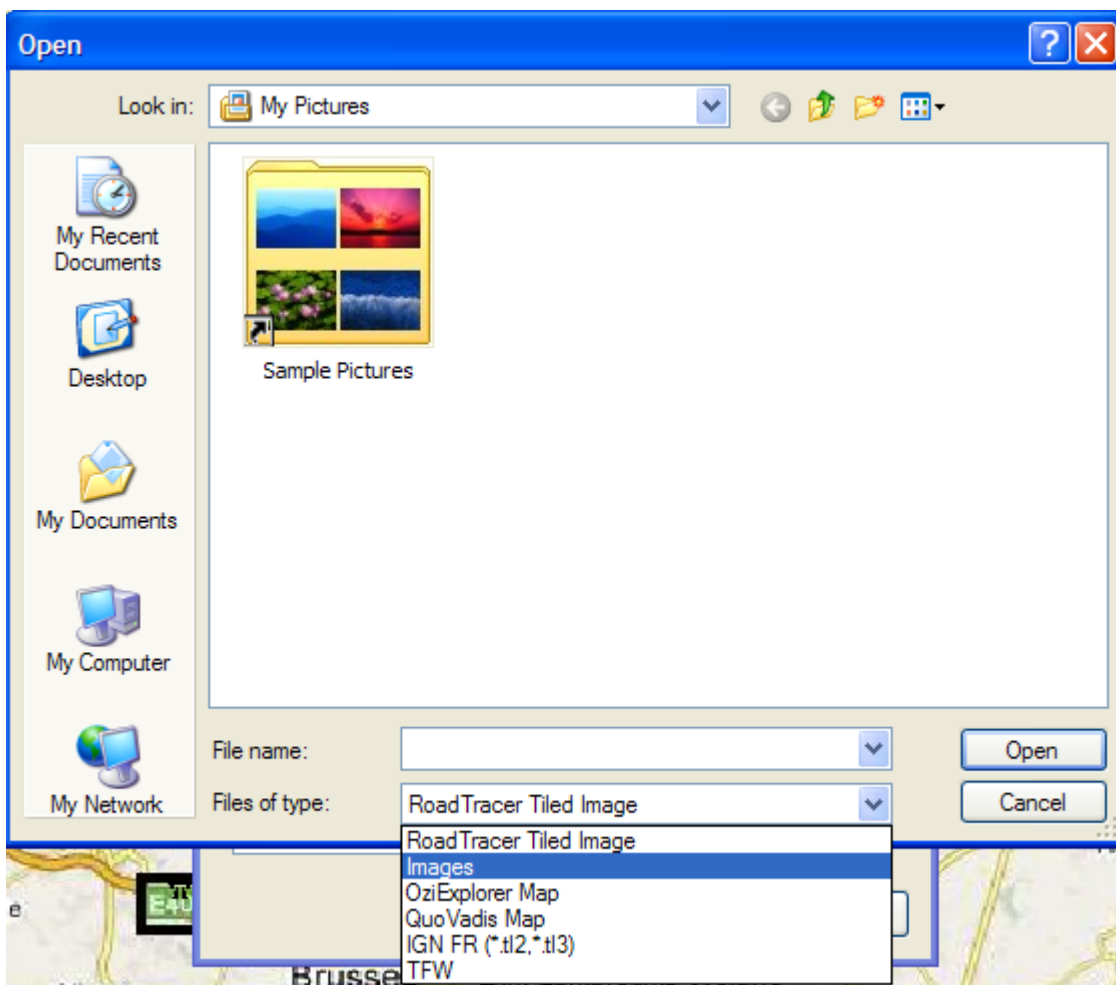
Description

I wish to import a scanned map.

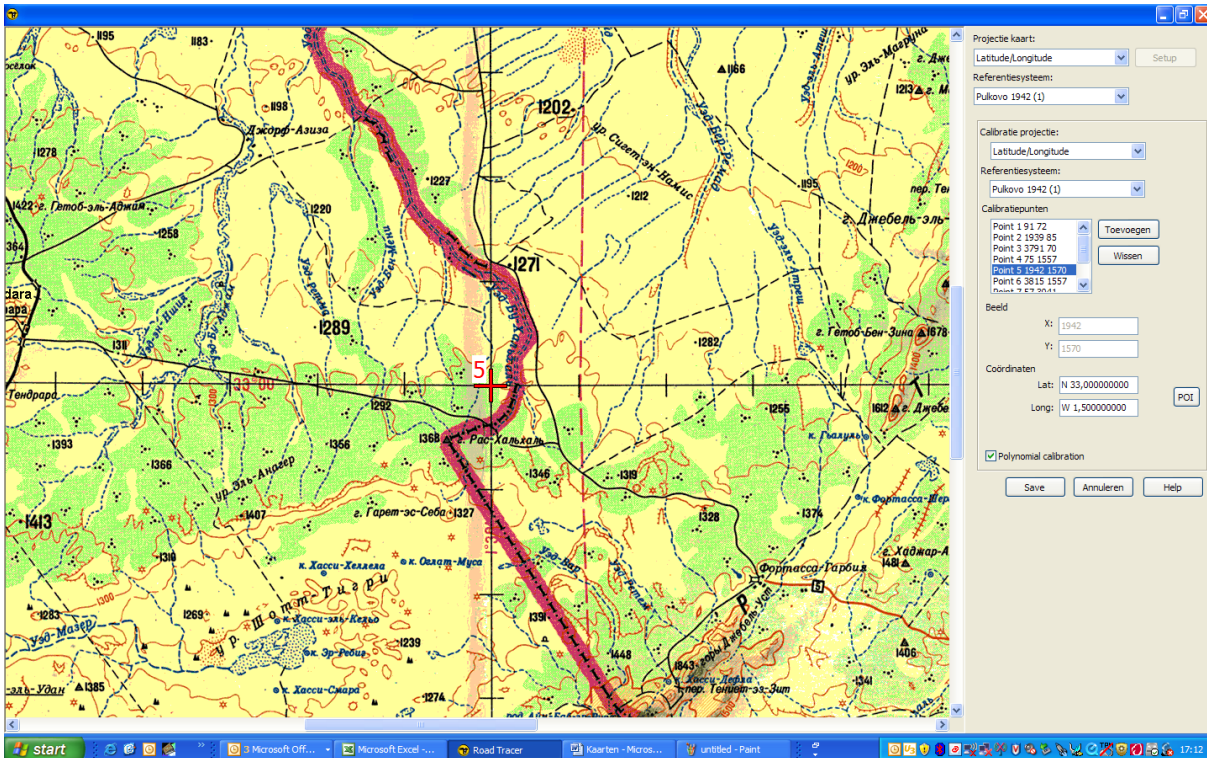
Procedure

How to import a scanned map (image)

- a) Scan the map in one or several images
- b) Click the  button (icon above the map in the toolbar)
- c) Press the **New** button
- d) Give a name to your map.
- e) Press the **Add** button .
- f) Select **images (see below)**.



- g) Select the first image (1st part of the map)
- h) Select **Open**
- i) Click on **Calibrate**



- j) Click on **Add**, Select on the map the calibration point location, introduce its latitude and longitude.
- k) Repeat at least 3 times the j) step
- l) If the map is made of several images, repeat the steps e) through k) for each of the images.